

Name: _____

Date: _____

Period _____

Below are several situations where you are to analyze all the forces acting on the object. You are to sketch all the forces about a point and draw the vector diagram (typically a triangle). Identify in the picture about which point you are analyzing the forces. Then to identify if the sum of the forces is zero.

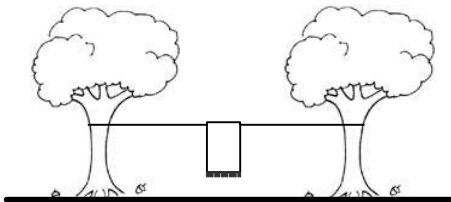
Sitting in a chair



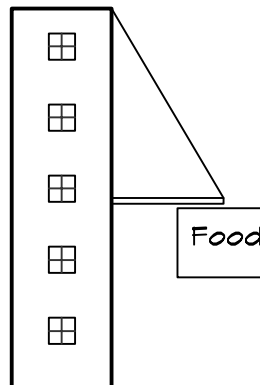
Hanging on a rope.



Towel on a line



Building sign



Car driving at constant velocity



Airplane flying at constant velocity

